

www.terrasolid.com

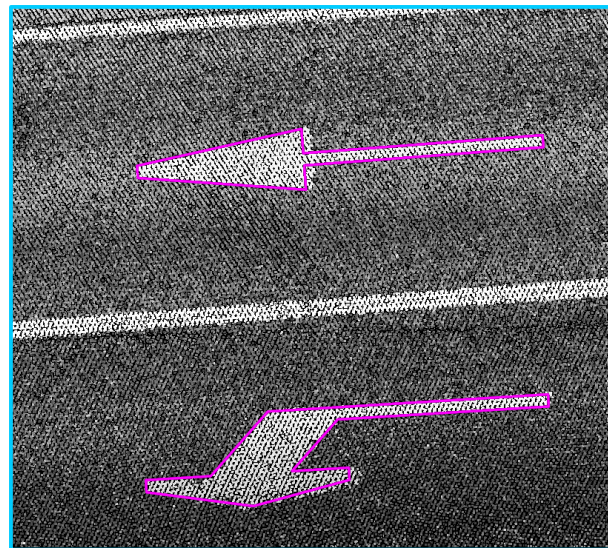
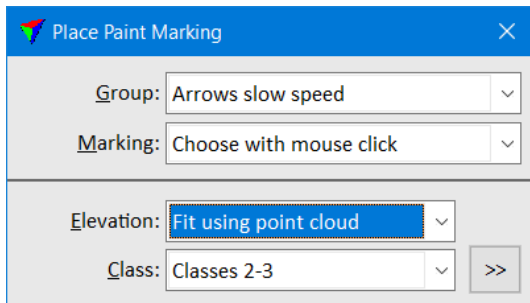
Vectorizing Paint Markings

Arttu Soininen 17.03.2022



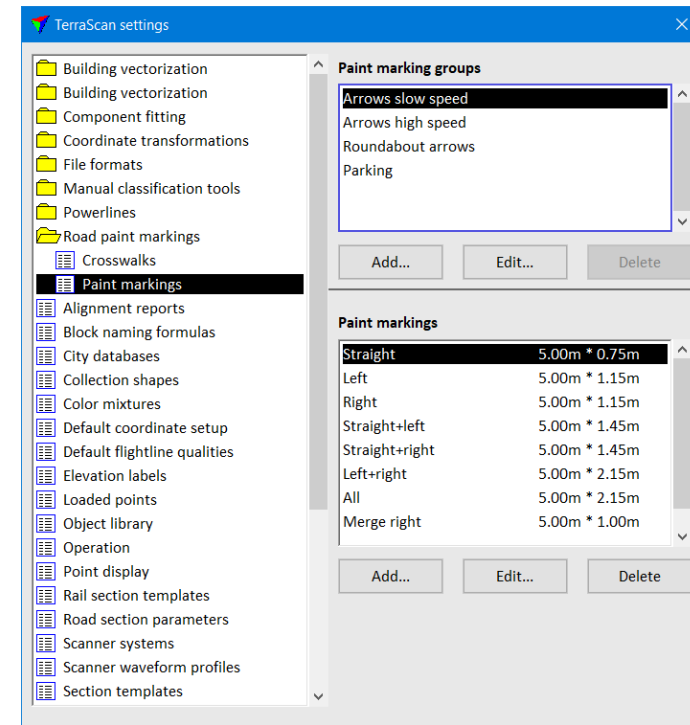
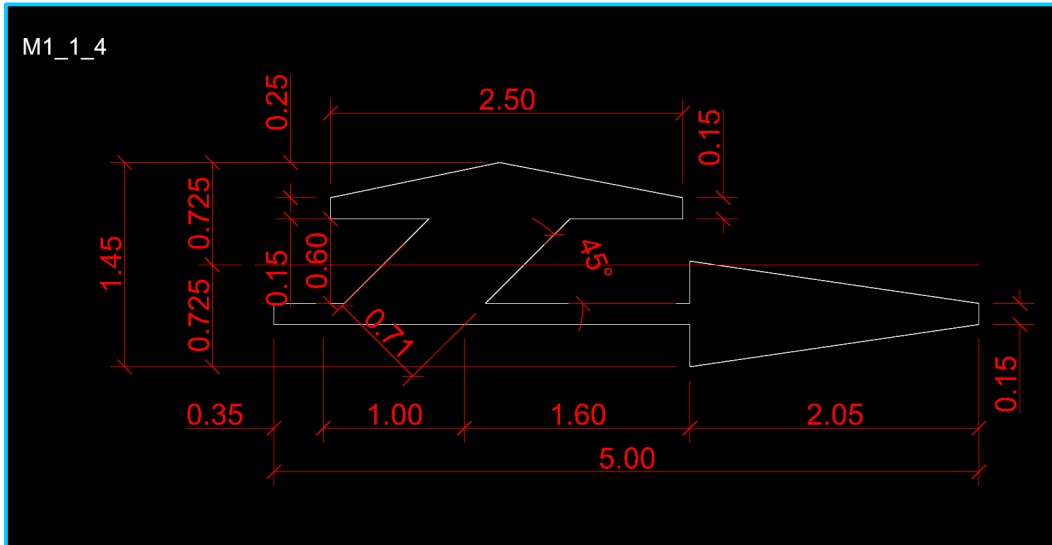
Place Paint Marking

- Tool for manually placing known shape paint marking such as turn arrow
- Define paint markings in **Scan Settings** and **Road paint markings / Paint markings** category
- Xy location is manual: view **Intensity auto** point cloud or raster ortho in the background
- Elevation can come from point cloud data – software fits a single plane equation to local points



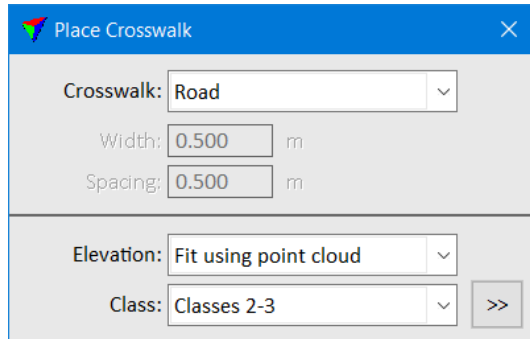
Paint Marking Definitions

- Create a vector file with paint markings running left to right
- Decide what is the origin point for each
- Create groups for different types of paint markings
- Each group should have a handful of markings in it



Place Crosswalk

- Tool for manually placing paint stripes at a crosswalk
- Define crosswalk dimensions in **Scan Settings** and **Road paint markings / Crosswalks** category
- Stripe width is fixed, spacing is slightly adjusted, everything is aligned and 90 degree corners

A screenshot of the "Place Crosswalk" dialog box. It has a blue header with the TerraSolid logo and a close button. The settings are as follows:

Crosswalk:	Road	▼
Width:	0.500	m
Spacing:	0.500	m
Elevation:	Fit using point cloud	▼
Class:	Classes 2-3	▼ >>

