

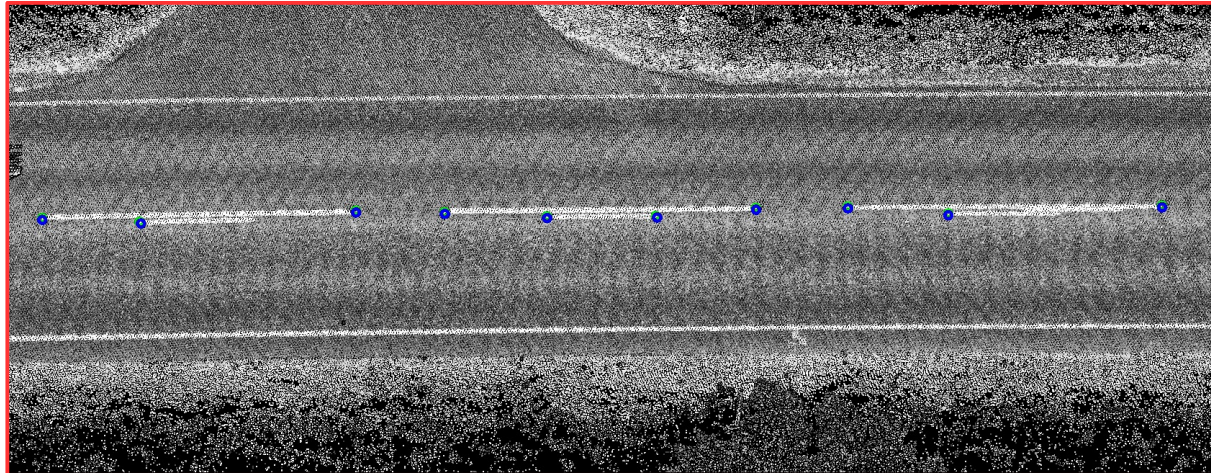
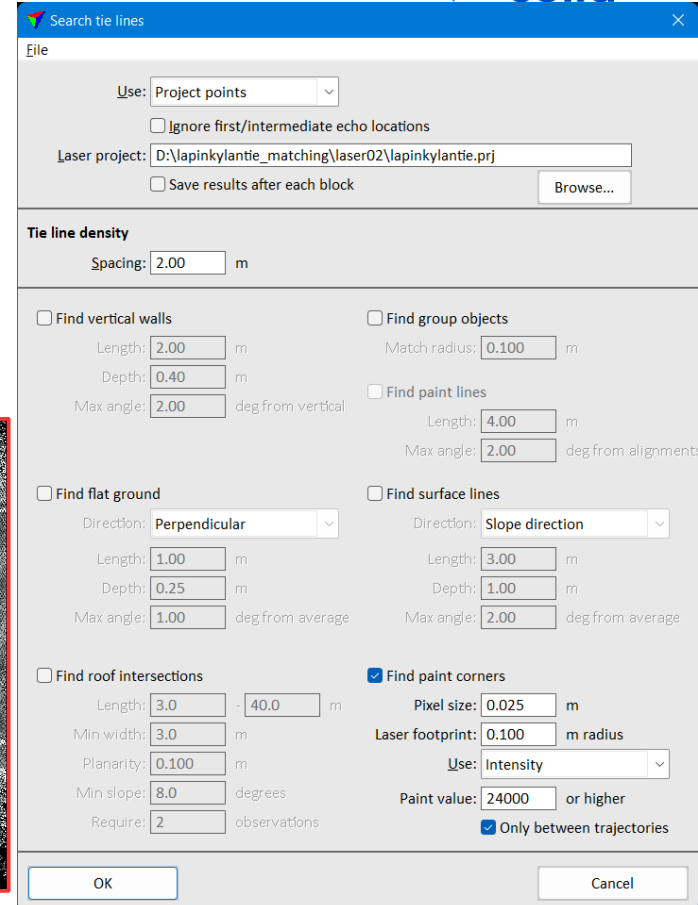
TerraMatch New Features

Arttu Soininen 14.03.2023

Paint Corner Search

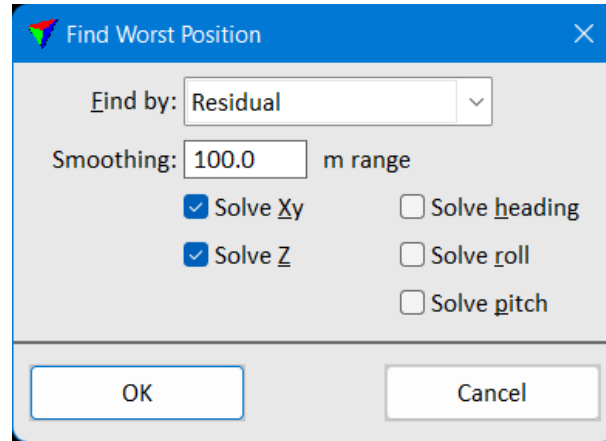


- **Search tie lines** has option for searching paint corners
- Gives automatic observations for matching drive passes to each other in xyz
- Requires dashed paint lines (preferably between drive passes)
- Requires good intensity values



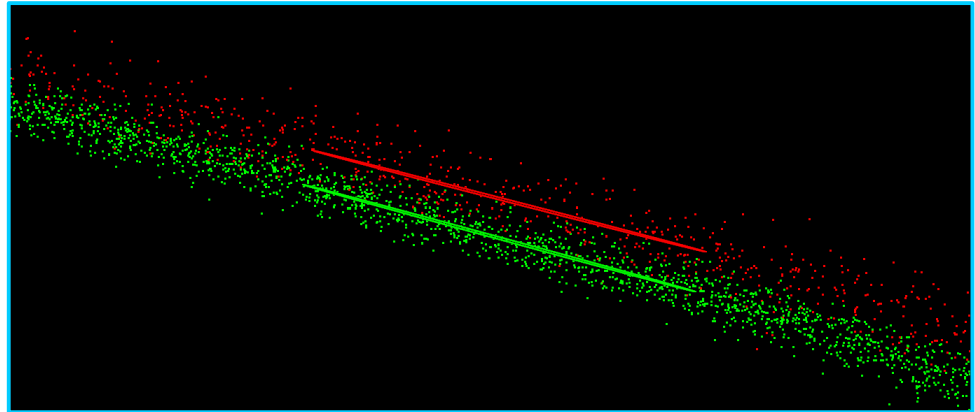
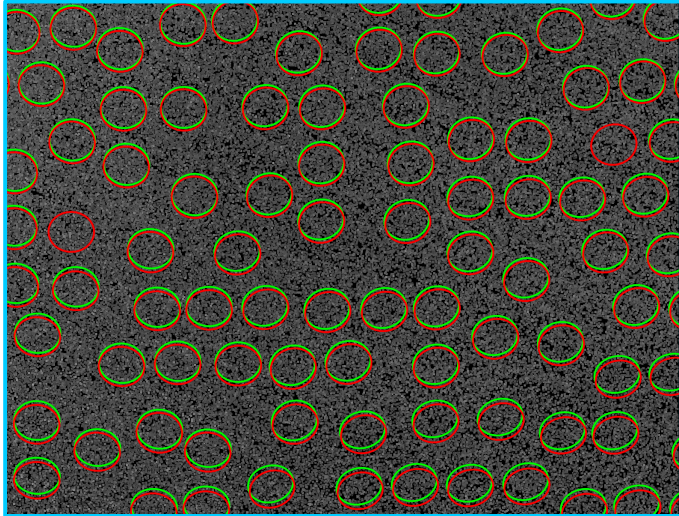
Finding Worst Observation

- **Find worst** can search for observation with the largest residual mismatch after applying a fluctuating correction



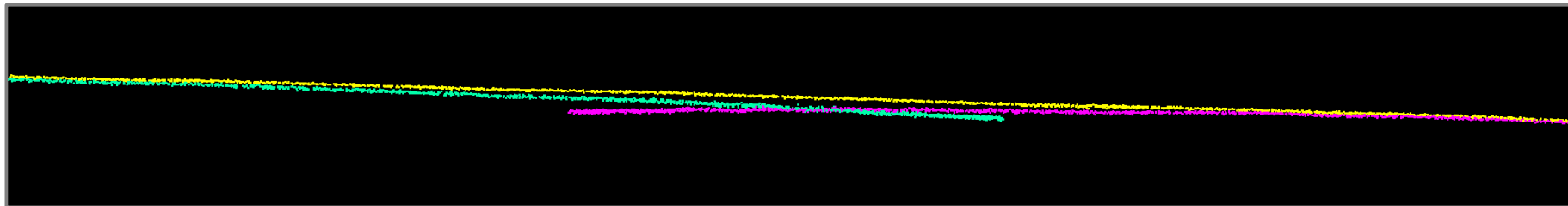
Plane Equation Tie Line Type

- New tie line type:
 - Plane fitted to circular area of points from one flight pass
 - Choose circle radius based on point density – 0.2m to 2.0m



Find Mirror Angle Correction

- Solves correction curve for mirror angle (left-right angle being off)
- Mirror angle flaw can be seen as a smiling face or as a sad face effect
- Correction curve can fix for non-symmetrical mirror angle flaw



Find Mirror Angle Correction

Use classes: >>

Observe every: th point

Angle limit: deg (pulse _plane normal)

Ignore limit: m or larger shifts

Correction for:

Skip from: To: deg

Trajectory dir:

