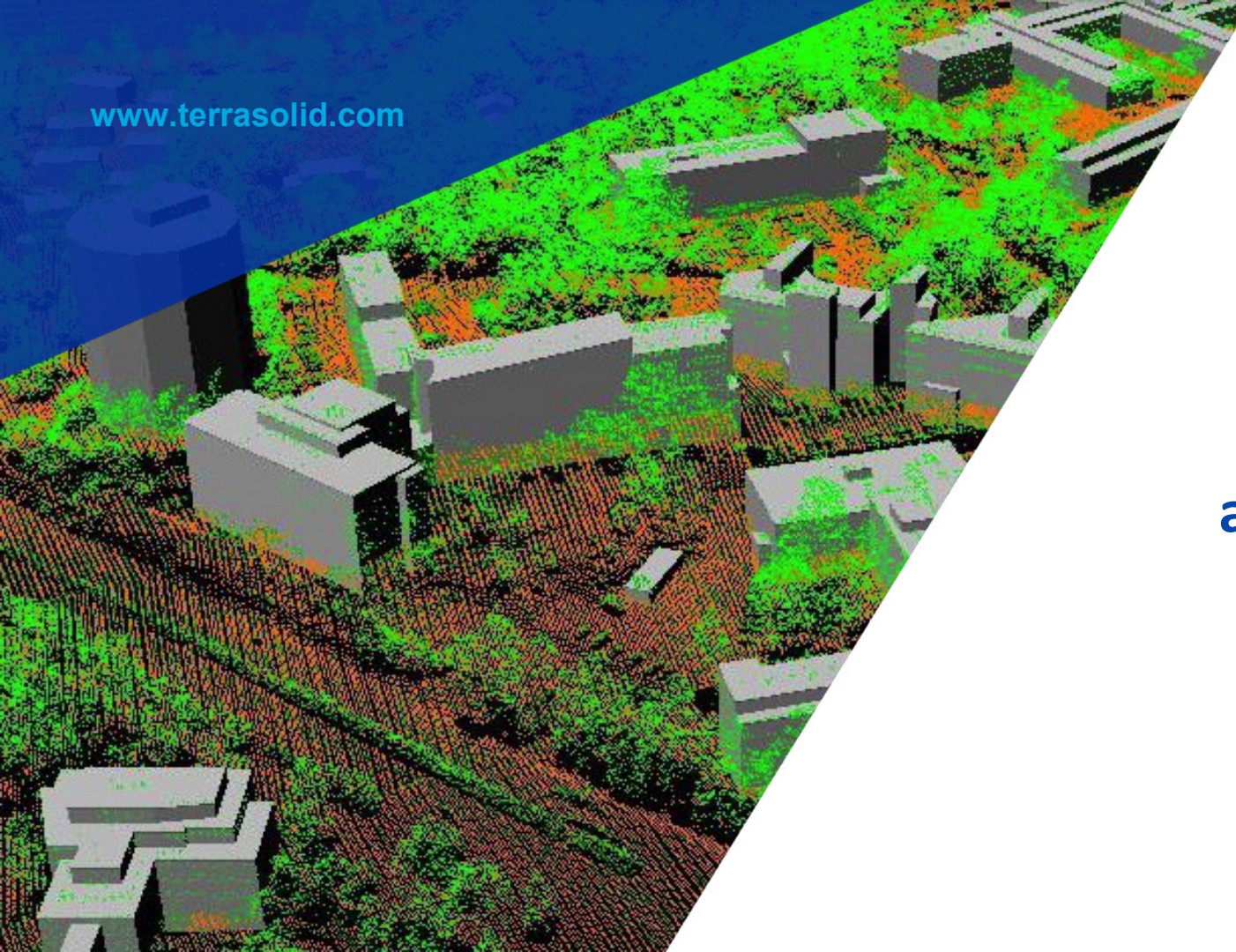


www.terrasolid.com



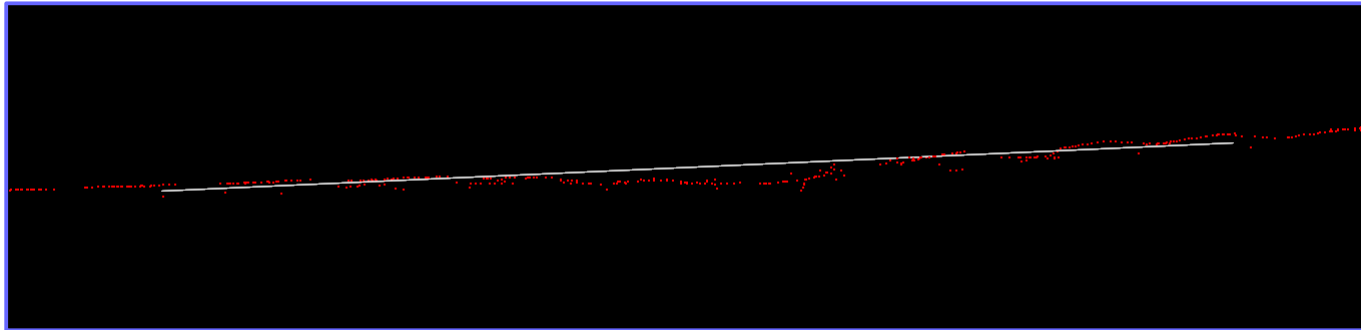
Road Bumps and Potholes

Arttu Soinen 13.10.2020



Road Bumps and Potholes

- **Compute distance** tool can compute how much each point on a road surface differs from a line fitted to a narrow longitudinal section along the road
- Bumps get a positive value – point is above fitted line
- Potholes/depressions get a negative value – point is below fitted line
- Computation requires:
 - Hard surface classification is done
 - Height from ground classification is done (to include points very close to the hard surface)



Visualizing Bumps and Potholes

- Coloring by distance gives you an ability to view bumps and potholes
- **Export raster image** from main window and **Export raster images** from project window can produce orthophotos with the same distance coloring

