

www.terrasolid.com

New Features 2016

TerraStereo + Spatix

TerraSurvey

TerraBore

Juuso Siren 1/2/2016



TerraStereo



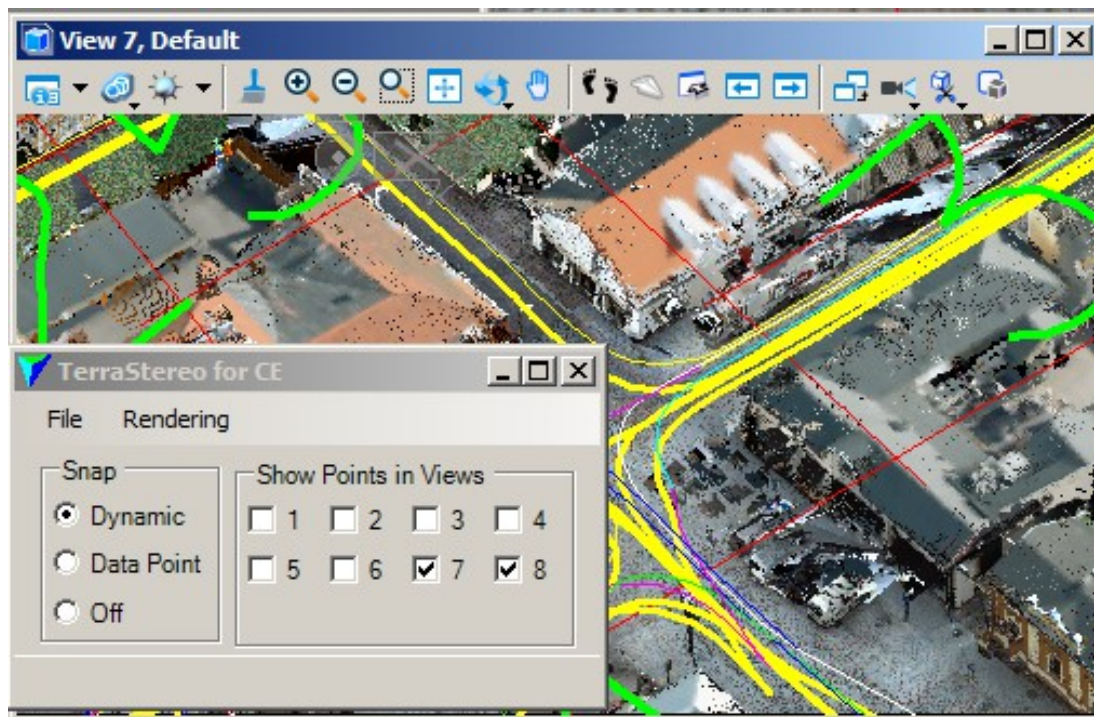
- User interface for Microstation CE
- Streamlined standalone GUI
- Split Screen Synchronization
- Functional and visual cursors

Spatix



- Improved snapping
 - 2D snap
 - Parallel snap
- Improved locks
 - Lock to element
 - Detected plane lock (using point cloud)
- Improved connectivity with MS V8i client

UI for 64-bit CE

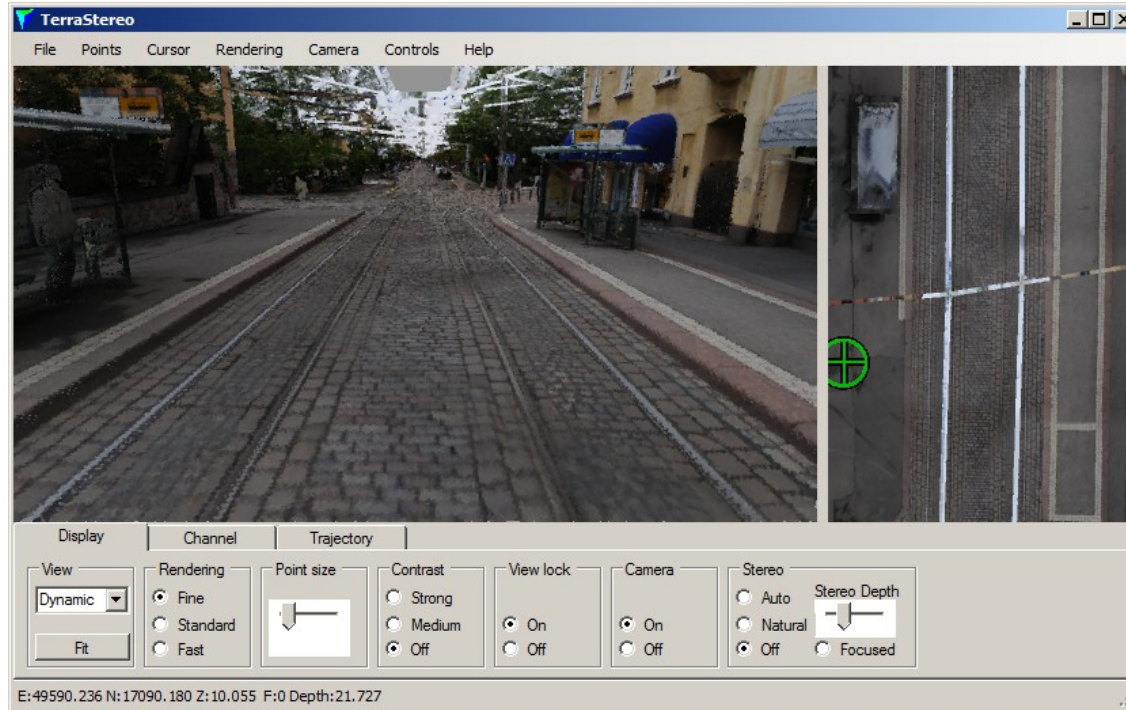


UI for 64-bit CE

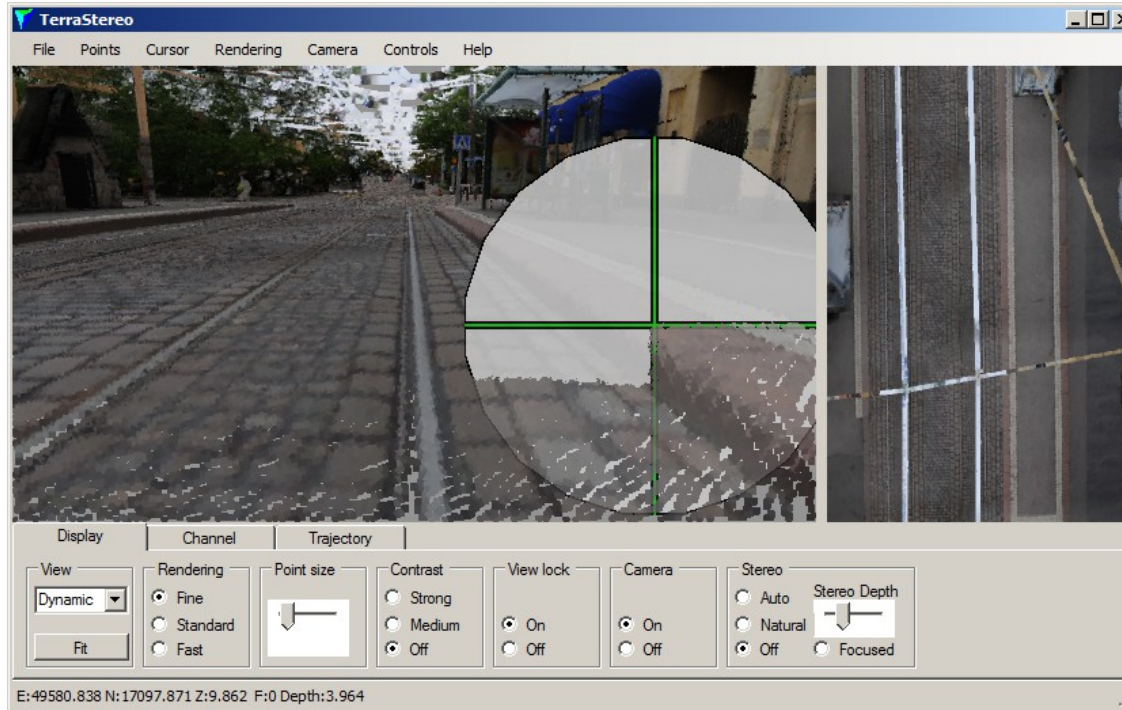


- RGB, Intensity, Classification
- Classification Masking
- Snap and view control

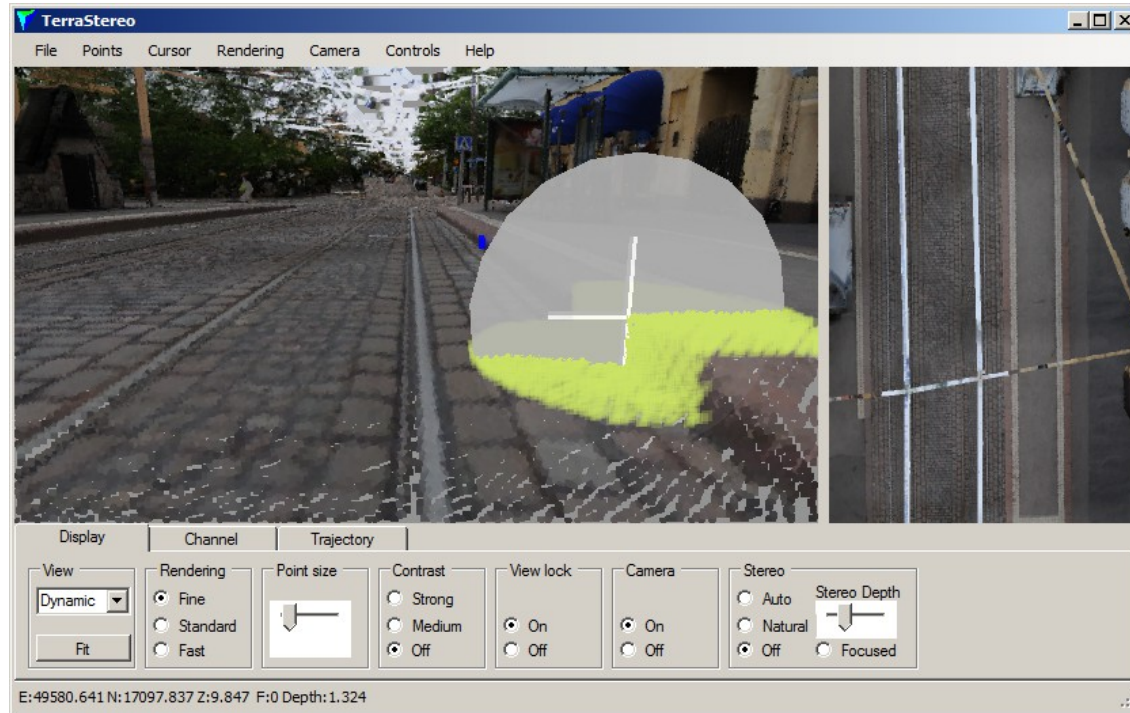
New Split Screen GUI



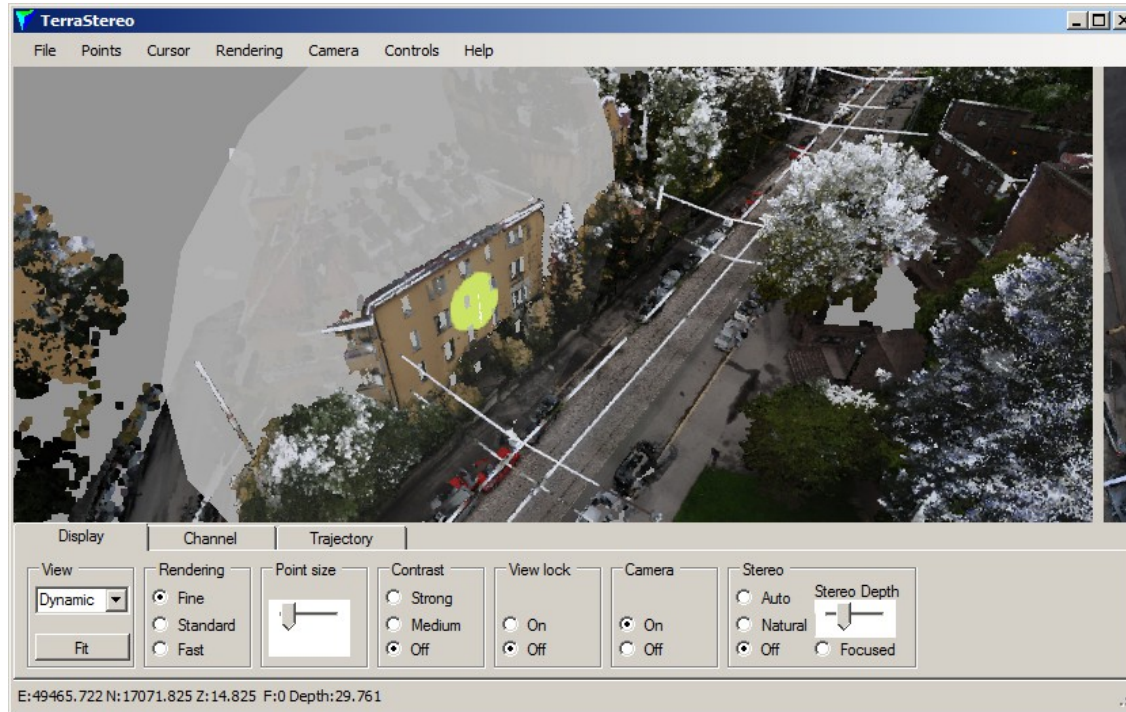
Functional Cursors



Functional Cursors



Functional Cursors



TerraSurvey



- Beta for CE almost ready
 - Font support is currently limited
 - All features not yet tested
 - First beta out during User Event at
- No more indexed levels and colors a'la V7

TerraBore



- Beta for CE released at January
 - Font support is currently limited
 - Almost ready for production