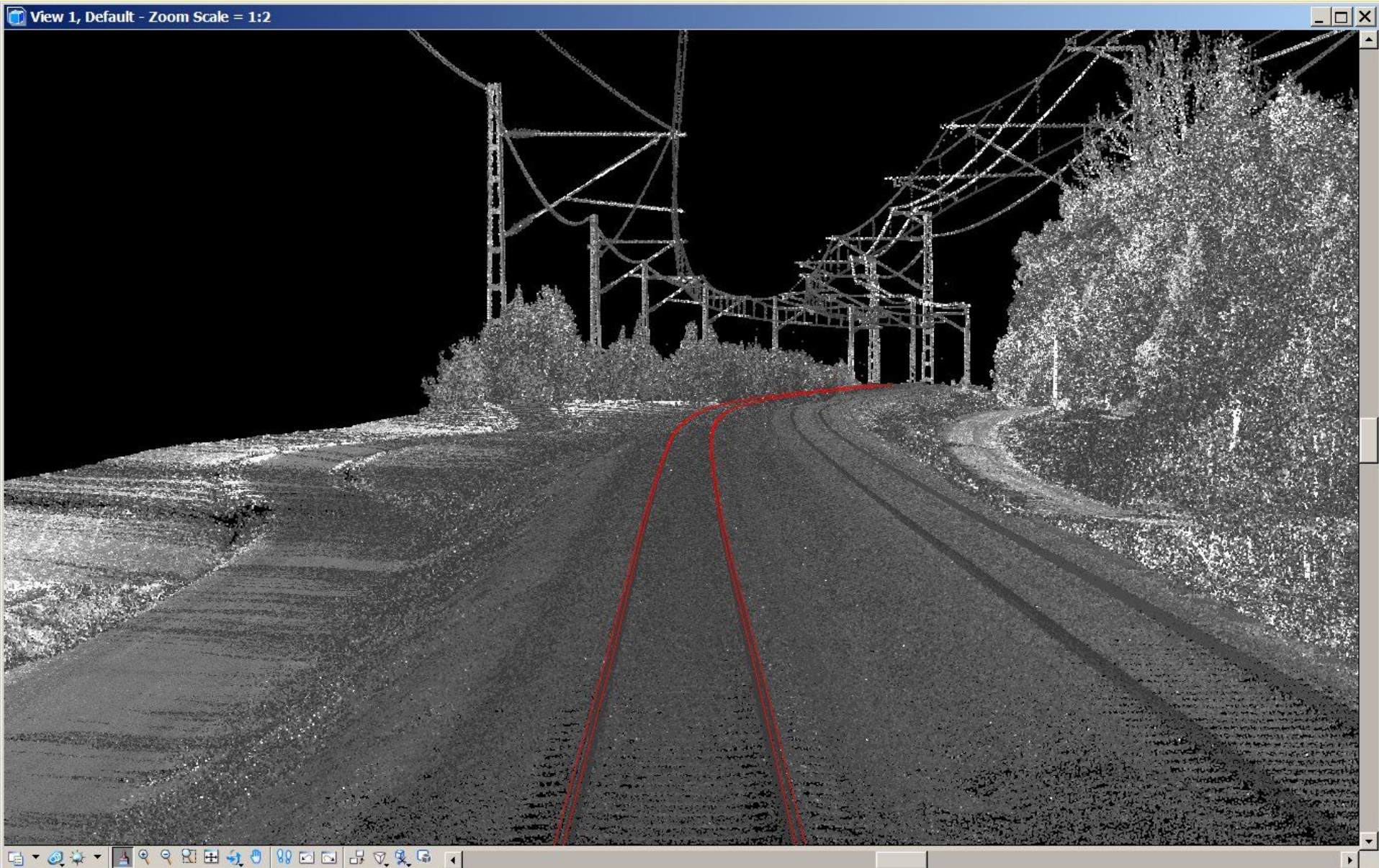


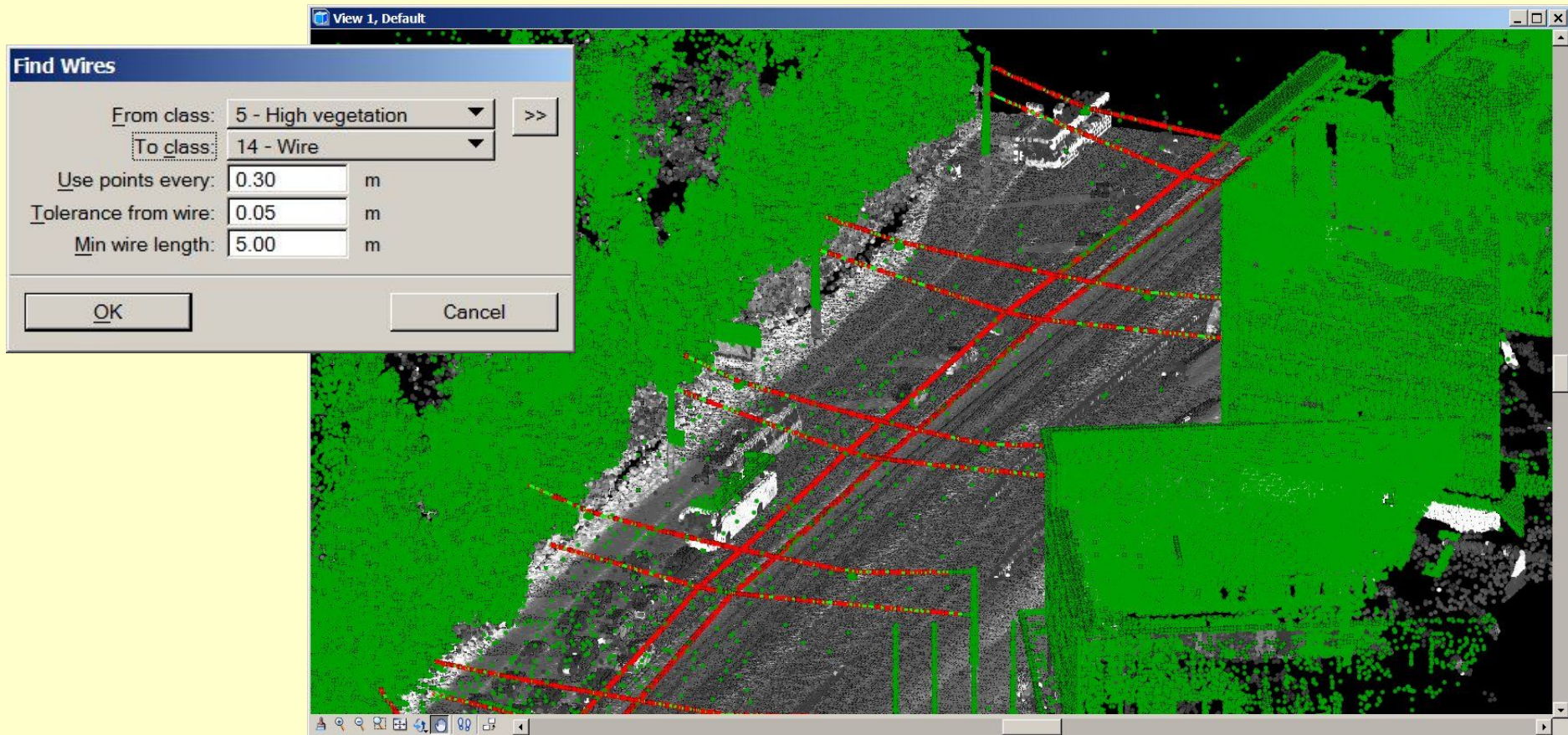
# Mobile Railroad Processing





# Find Wires

- Automatic tool for vectorizing overhead wires
- Start with high vegetation class



# Check Wire Ends

- Tool for checking each wire end point
- User views every point, modifies if necessary and approves

helsinki\_tram\_wires.dgn [3D - V8 DGN] - Bentley Map PowerView V8i (SELECTseries 2) (Not for Commercial Use)

File Edit Element Settings Tools Utilities Workspace Applications Window Help

Level 16

View 1 - Top, Default - Zoom Scale = 1:42

Check wire ends

1	0.000	Approved
2	0.000	Approved
3	0.000	Need to check
4	0.000	Need to check
5	0.000	Need to check
6	1.249	Need to check
7	0.000	Need to check

Buttons: Add point, Move point, Average, Join, Approve, Show location, Identify

View 4, Default - Zoom Scale = 1:54

Zoom Out

Zoom Ratio: 2.00

Move Camera

TerraScan - 4 522 187 points

File Output Point View Classify Tools Flightline

View 2, Default - Zoom Scale = 1:101

Display complete

Points loaded

Level 16

6:52



# Find Rails

- Automatic vectorization of rails
- Software looks at consecutive cross sections of laser data and finds position where best number of laser points match user defined cross section shape
- Starts with an approximate centerline:
  - Lever arm corrected trajectory
  - Manually placed approximate centerline

**Find Rails**

From class: 4 - Medium vegetation >>

Rail section: R65

Find along: Trajectories

Trajectories: 51,52

Step: 0.500 m along alignment

Section depth: 0.250 m

Max offset: 0.150 m from alignment

Max dz: 0.150 m from alignment

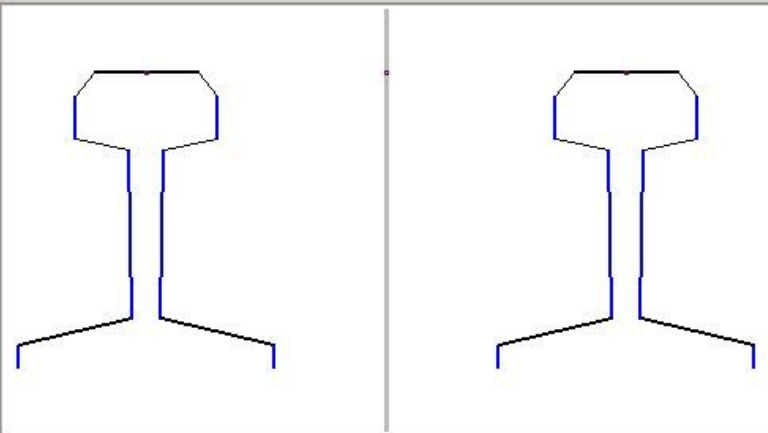
Cancel

**Rail section template**

Name: R65

Vert	-0.840	0.000	-0.840	0.013	Medium
Horz	-0.840	0.013	-0.771	0.030	High
Vert	-0.771	0.030	-0.773	0.133	Medium
Horz	-0.773	0.133	-0.805	0.140	Low
Vert	-0.805	0.140	-0.805	0.166	Medium
Horz	-0.805	0.166	-0.794	0.180	Low
Horz	-0.794	0.180	-0.730	0.180	High
Horz	-0.719	0.166	-0.730	0.180	Low
Vert	-0.719	0.140	-0.719	0.166	Medium
Horz	-0.751	0.133	-0.719	0.140	Low
Vert	-0.753	0.030	-0.751	0.133	Medium
Horz	-0.684	0.013	-0.753	0.030	High
Vert	-0.684	0.000	-0.684	0.013	Medium
Vert	0.840	0.000	0.840	0.013	Medium

Add... Edit... Delete



OK Cancel